

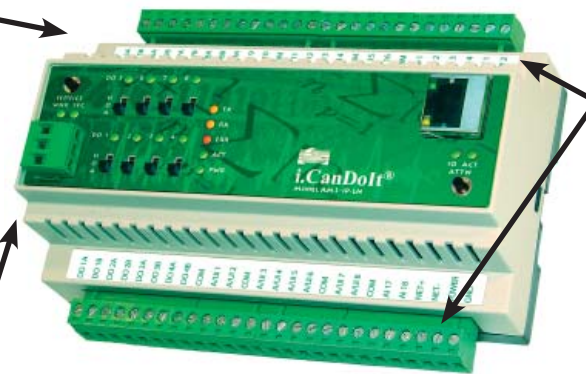
*AddMe[®] III
i.CanDoIt[®]*



CONTROL SOLUTIONS, INC.
MINNESOTA

*Web server
email client
Modbus TCP client/server
SNMP agent
FTP server
...plus...
Astronomical Clock
Scheduler
Data logging
Event notification
User programmable*

LonWorks TP/FT-10



*16 Analog/universal inputs
0-10VDC
Thermistor
Dry contact/discrete
Pulse counter (2 ch)
2 Analog-only inputs
2 Pulse counter inputs
4 Analog outputs
8 Relay outputs
with manual override*

Modbus RTU Master

Web enabled multi-protocol small site controller

i.CanDoIt[®] AddMe III

Control Solutions' i.CanDoIt[®] Advanced AddMe III includes all of the features of AddMe II plus a lot more. AddMe III features 18 universal context sensitive inputs. When configured as an analog input, the continuously self-calibrating sigma-delta converter produces 15-bit resolution with high noise immunity. When configured as a discrete input, the converter switches to 8-bit resolution at 128 samples per second for fast response. AddMe III also includes 4 analog outputs, 2 pulse inputs, and 8 Form A relay outputs.

AddMe III includes powerful web based features, including:

- Data logging and event logging, trending
- Email notification and email data log delivery
- Weekly and on-demand real time scheduling
- Astronomical clock and time/date clock
- Programmability using PL/i structured language
- SNMP v2 agent for Get/Set access to data points
- SNMP trap generation based on rules
- Template rule generation for traps, emails, output triggers
- Modbus TCP client and server concurrently
- Multi-port gateway between Modbus RTU, LonWorks, SNMP, Modbus TCP, and HTML
- Integral web server with Flash file system
- User designed web pages with CGI access to data points
- Web based configuration and monitoring
- Cell phone friendly event notification capability
- Dynamic DNS support
- DNS host lookup, DHCP
- FTP data file access & firmware upgrades
- Telnet console session for account management
- Web client for server driven remote monitoring

FEATURES of Model AM3-IP-LN

- Web based configuration & operation
- Ethernet protocol support
 - BACnet IP • Modbus TCP • SNMP
- RS-485 protocol support
 - Modbus RTU Master
- LonWorks protocol support
 - 62 Bindable Local Network Variables
 - 50 Node Support for Unbound Polling
- User web pages
- Data logging, scheduling, email notifications
- Programmable
- 18 Analog/universal inputs (16 universal + 2 analog only)
 - 0-10VDC, Thermistor, dry contact
 - Software selectable input type (16 channels)
 - 0.1% reference, up to 16-bit resolution
 - Continuously self-calibrating sigma-delta converter
- 4 Analog outputs
 - 4-20mA (0-20mA)
 - 8-bit resolution
- 8 Discrete outputs
 - Form A relay, 5A @ 120VAC
 - HOA switches & status indicators
- 2 Discrete inputs
 - TTL to 24VDC
 - Pulse count frequency input
 - Totalizing count input
- Powered by 18-30VDC or 24VAC 50/60 Hz
- DIN rail mounting, 100mm H x 155mm W x 60mm D

www.csimn.com

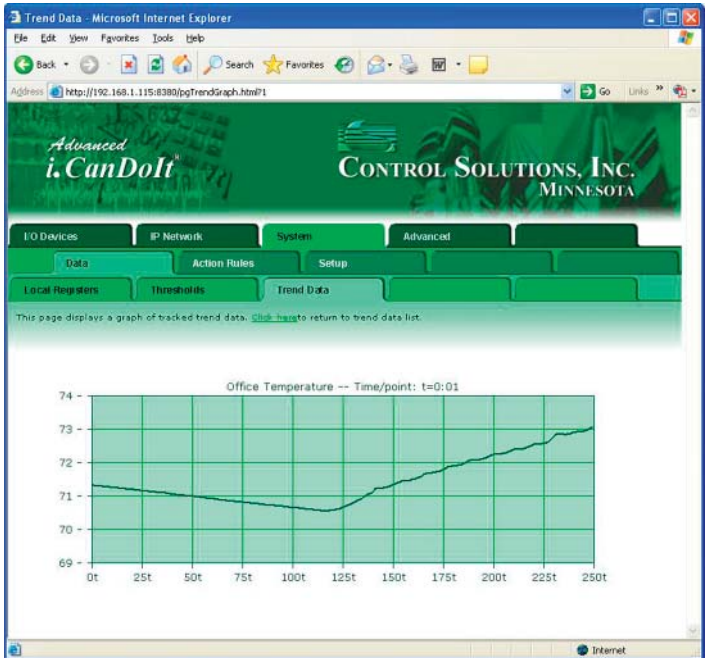
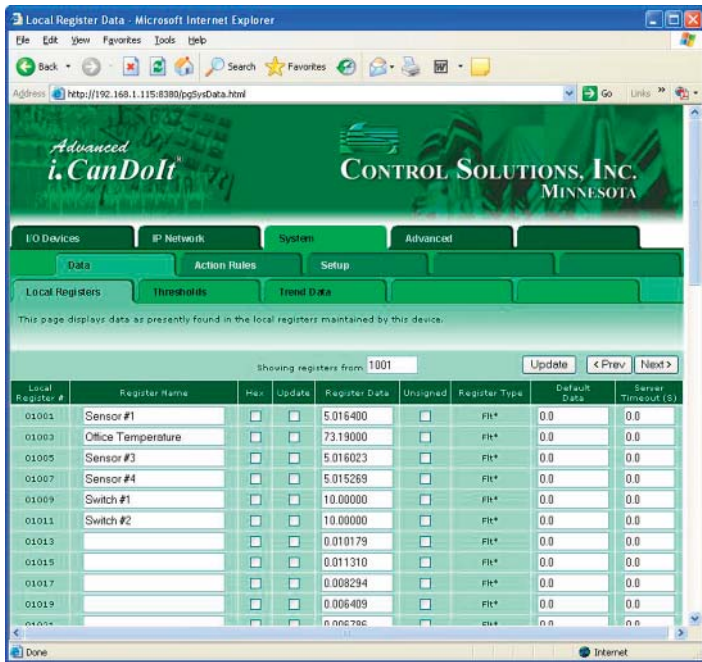


***i.CanDoIt*® AddMe III**

Control Solutions' *i.CanDoIt*® AddMe III packs a lot of I/O with the most commonly used capabilities in our growing family of popular web appliances.

Functions:

- Data Logging
- Remote Monitoring & Alarms
- Event Notification
- Scheduling (Astronomical or Time/Date)
- User Programmable Control Algorithms
- User Programmable Web Pages



i.CanDoIt® is available now. Visit www.csimn.com for more information, a guided tour of the web server, and an online demo copy of the entire web site contained in AddMe III.

Visit our web site for

- Full details
- User Manuals
- Pricing
- On-line Ordering



www.csimn.com

AddMe Jr. gives you all of the functionality of AddMe III in a smaller package with a lower point count. Visit our web site for more!



CONTROL SOLUTIONS, INC.
 2179 FOURTH ST., STE. 2-D • PO BOX 10789
 WHITE BEAR LAKE, MN 55110-0789
 VOICE (651) 426-4410 • FAX (651) 426-4418
 TOLL FREE 1-800-872-8613

© 2007 Control Solutions, Inc. *i.CanDoIt*® is a registered trademark of Control Solutions, Inc. LonWorks® is a registered trademark of Echelon Corporation. LonMark™ is a trademark of Echelon Corporation.