

AddMe® Family
LONWORKS I/O



CONTROL SOLUTIONS, INC.
MINNESOTA



AddMe Lite

14 I/O Points in a Single Node

*12 Analog/Universal Inputs
2 Discrete (FET) Outputs
2 Pulse/Discrete Inputs
31 Modbus RTU Sensors
12 Modbus RTU Actuators*

*LonMark
Sensor & Actuator
Functional Blocks*

AddMe Lite LonWorks I/O

Control Solutions' AddMe Lite includes all of the features of AddMe III in a scaled down package. AddMe Lite features 12 universal inputs. Two of the universal inputs support pulse counting, either rate or totalizing. Two FET outputs may drive small DC loads directly, or operate larger external relays.

Network variables for the analog I/O points may be configured for any scalar LonMark SNVT, fixed point or floating point. In addition, analog (universal) inputs may be configured to SNVT_switch with the on threshold programmed via the translation tables. Additional 56-point linearization tables are pre-programmed to convert 3K, 10K or 20K thermistors to SNVT_temp, SNVT_temp_p or SNVT_temp_f.

The standard LonMark Object plug-in, or LonMaker browser, can be used to do all necessary configuration. Send times for network traffic throttling and heartbeat, send on delta, object override, etc., are all supported per LonMark standards.

AddMe Lite includes an RS-485 serial communications port in addition to the LonWorks TP/FT-10 network port. AddMe Lite includes a Modbus RTU Master. Up to 43 registers or objects may be interfaced, each mapped to a bindable network variable. There are 12 network input variables for writing Modbus registers, and 31 network output variables for reading Modbus registers.

LonWorks I/O and Modbus Gateway in a single gateway size package!

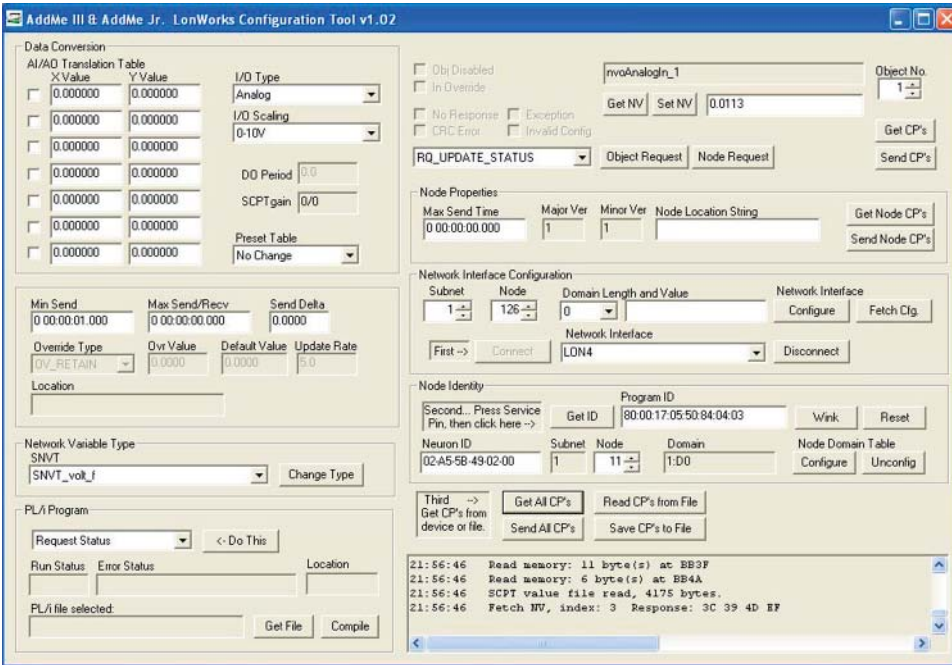
FEATURES of Model AMJR-14-LN

- TP/FT-10 (Free Topology) LonWorks network interface
- EIA-485 protocol support
Modbus RTU Master
- Programmable
- 12 Analog/universal inputs
 - 0-10VDC, Thermistor, dry contact
 - Software selectable input type
 - 10-bit resolution
 - Pulse input capability on 2 channels
- 2 Discrete outputs
 - Open drain FET, current sink 1A @ 24VDC
- Powered by 10-30VDC or 24VAC 50/60 Hz
- Service & Wink LEDs
- DIN rail mounting, 100mm H x 70mm W x 60mm D
- Pluggable screw terminal blocks
- Operating temperature -40°C to +85°C
- Humidity 5% to 90%
- FCC Class A, CE Mark

www.csimn.com



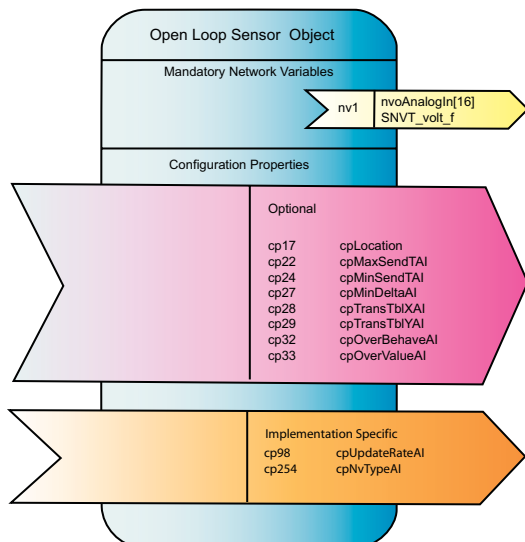
*Easy to use off-line configuration tool is Free!
 You can also use LonMaker or any other tool with configuration property
 access to configure AddMe Lite.*



Use our Free configuration tool with any OpenLDV supported LonWorks network interface on your PC. Set configuration properties, read & write network variables to test your configuration, read object properties for diagnostics, and upload your PL/I program if you wish. Save your settings to an XML file to recreate the same configuration later. The free download includes HTML help pages to guide you through setup and device configuration.

AddMe® Lite LonMark® Functional Profiles

All of the I/O points are defined as LonMark sensor or actuator objects for maximum flexibility. Features such as network traffic throttling, heartbeat, override, and send delta are supported. Network variable types may be changed on analog I/O and discrete input. Analog I/O may be linearized with a translation table.



Visit our web site for

- Full details
- User Manuals
- XIF files
- Pricing
- On-Line Ordering

www.csimn.com



CONTROL SOLUTIONS, INC.

2179 FOURTH ST., STE. 2-D • PO BOX 10789
 WHITE BEAR LAKE, MN 55110-0789
 VOICE (651) 426-4410 • FAX (651) 426-4418
 TOLL FREE 1-800-872-8613

© 2007 Control Solutions, Inc. AddMe® is a registered trademark of Control Solutions, Inc. Echelon®, LonWorks®, LonBuilder®, NodeBuilder®, and Neuron® are US registered trademarks of Echelon Corporation. LonMark™ is a trademark of Echelon Corporation.