

AddMe® Family
LONWORKS I/O



CONTROL SOLUTIONS, INC.
MINNESOTA



Six Pak

6 I/O Points in a
very compact Node

4 Analog/Universal Inputs
2 Discrete (FET) Outputs
High/Low Alarm Functions

LonMark
Sensor & Actuator
Functional Blocks

AddMe Six Pak LonWorks I/O

Control Solutions' AddMe Six Pak includes the best features of AddMe Lite in a still smaller package. The Six Pak features 4 universal inputs. Two FET outputs may drive small DC loads directly, or operate larger external relays.

Network variables for the analog I/O points may be configured for any scalar LonMark SNVT, fixed point or floating point. In addition, analog (universal) inputs may be configured to SNVT_switch with the on threshold programmed via the translation tables. Translation tables are available to convert 3K, 10K or 20K thermistors to SNVT_temp, SNVT_temp_p or SNVT_temp_f.

The standard LonMark Object plug-in, or LonMaker browser, can be used to do all necessary configuration. Send times for network traffic throttling and heartbeat, send on delta, object override, etc., are all supported per LonMark standards. An off-line configuration tool is also available for free download.

The analog sensor inputs include the full complement of LonMark alarm features. Each input has two high and two low alarm limits with hysteresis and minimum on time. Alarms are reported via the node object nvoAlarm2, and also appear in the sensor's object status. Alarm reporting can be turned on or off via node object requests.

LonWorks I/O: Small size, big on functions!

FEATURES of Model AM2-D6

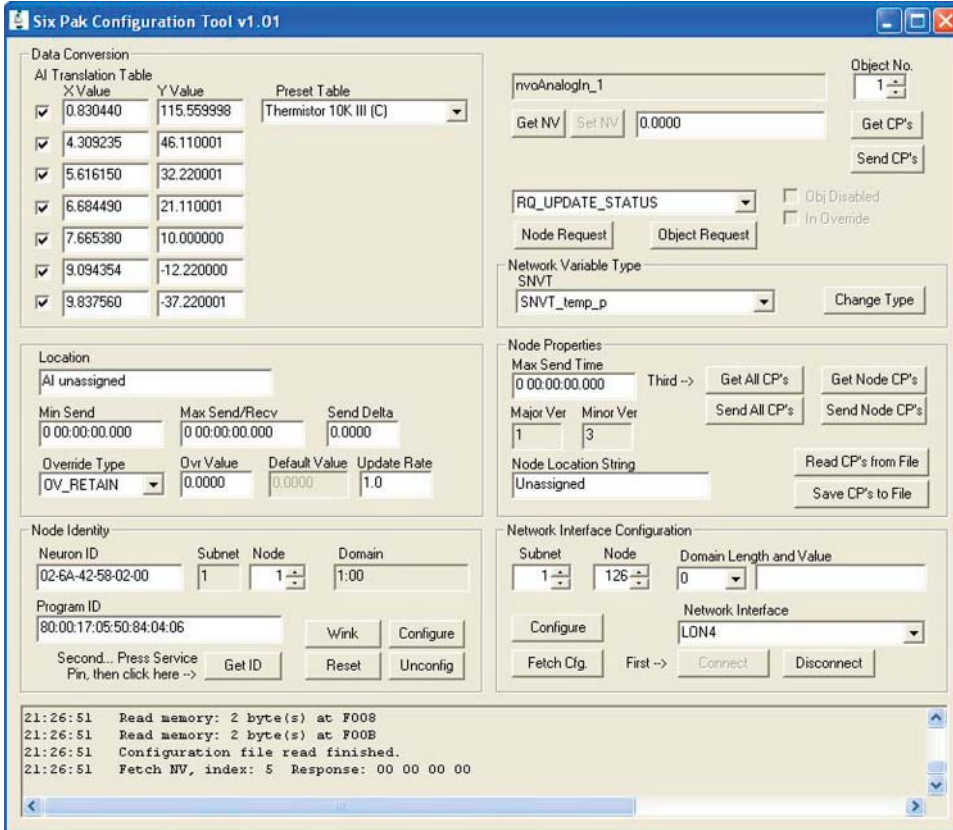
- TP/FT-10 (Free Topology) LonWorks network interface
- High/Low alarms plus hysteresis, min. on time
- SNVT_alarm2 reporting of alarms
- 4 Analog/universal inputs
 - 0-10VDC, Thermistor, dry contact
 - Software selectable input type
 - 10-bit resolution
- 2 Discrete outputs
 - Open drain FET, current sink 1A @ 24VDC
- Powered by 10-30VDC or 24VAC 50/60 Hz
- Service & Wink LEDs
- DIN rail mounting, 100mm H x 35mm W x 60mm D
- Pluggable screw terminal blocks
- Operating temperature -40°C to +85°C
- Humidity 5% to 90%
- FCC Class A, CE Mark

www.csimn.com

AddMe® Family LONWORKS I/O



CONTROL SOLUTIONS, INC.
MINNESOTA



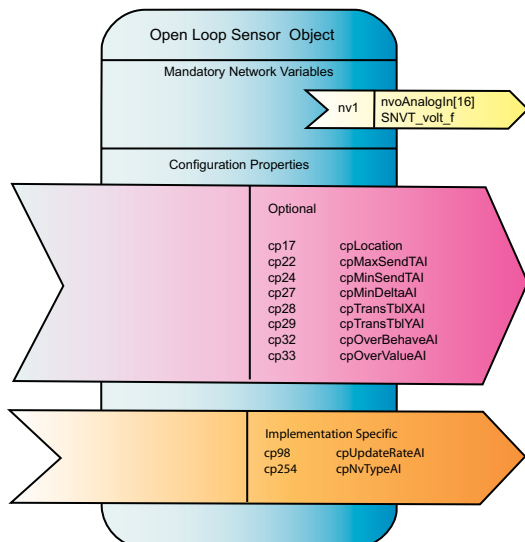
Easy to use off-line configuration tool is Free!

Use our Free configuration tool with any OpenLDV supported LonWorks network interface on your PC. Set configuration properties, read & write network variables to test your configuration, read object properties for diagnostics, and upload your PL/i program if you wish. Save your settings to an XML file to recreate the same configuration later. The free download includes HTML help pages to guide you through setup and device configuration.

You can also use LonMaker or any tool with configuration property access to configure AddMe SixPak.

AddMe® Six Pak LonMark® Functional Profiles

All of the I/O points are defined as LonMark sensor or actuator objects for maximum flexibility. Features such as network traffic throttling, heartbeat, override, and send on delta are supported. Network variable types may be changed on analog inputs. Analog input may be linearized with a translation table.



Visit our web site for

- Full details
- User Manuals
- XIF files
- Pricing
- On-Line Ordering

www.csimn.com



CONTROL SOLUTIONS, INC.

2179 FOURTH ST., STE. 2-D • PO BOX 10789
WHITE BEAR LAKE, MN 55110-0789
VOICE (651) 426-4410 • FAX (651) 426-4418
TOLL FREE 1-800-872-8613

© 2007 Control Solutions, Inc. AddMe® is a registered trademark of Control Solutions, Inc. Echelon®, LonWorks®, LonBuilder®, NodeBuilder®, and Neuron® are US registered trademarks of Echelon Corporation. LonMark™ is a trademark of Echelon Corporation.