

### BAS-7050 Processor Module



#### FEATURES - BAS-7050 Standard

- High Performance 32-bit RISC Processor (ARM 7)
- 2MB Flash
- 8MB RAM
- Battery Backed Real Time Clock
- 10/100 BaseT Ethernet port, auto-sensing
- I/O expansion bus supports 8 BAS-700 series I/O modules
- I/O boards from 2 to 24 points each
- 2 Amp power supply, 10-30VDC or 12-24VAC input
- Snap track mounting, 3.25”H x 2.00”W

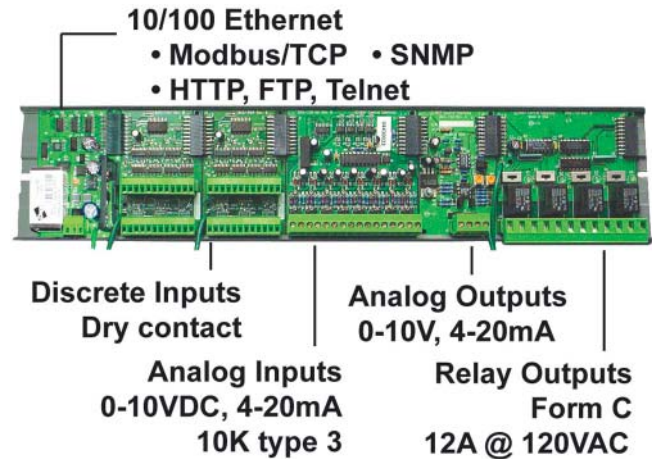
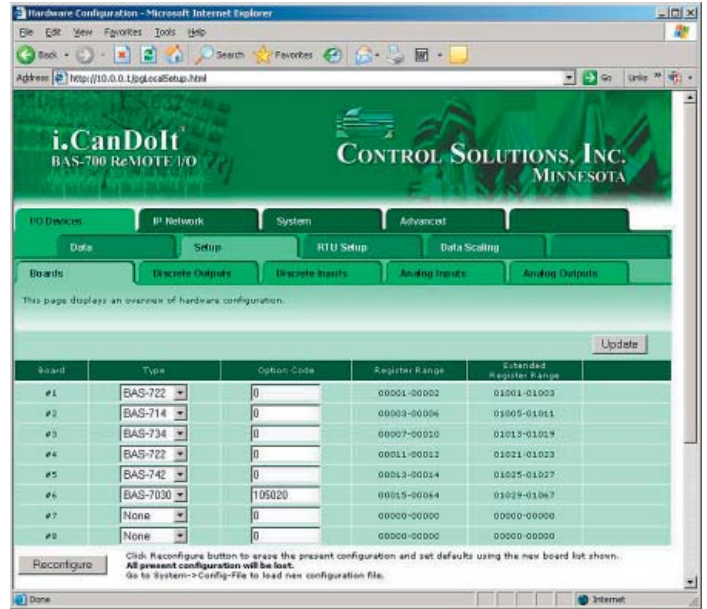
#### FEATURES - BAS-7050 with RT Option

- All of above features *plus...*
- 4MB Flash with i.CanDoIt® installed
- Battery Backed Real Time Clock

The BAS-7050 processor module features a high powered RISC processor with Ethernet network capability. This brings the entire series of BAS-700 I/O modules to Ethernet, and to the Internet if you choose to. Support is available for SNMP, HTTP, FTP, email, and other Internet protocols.

The BAS-7050 processor board includes enough memory to support a fairly extensive embedded application. Application code can be downloaded to Flash via FTP for software upgrades.

The BAS-7050 is designed to support Control Solutions’ Modbus by the Module and Simple I/O for SNMP applications. These provide a user friendly web based remote I/O system using Modbus/TCP or SNMP protocols. Visit [www.csimmn.com](http://www.csimmn.com) for more information on these applications.



**CONTROL SOLUTIONS, INC.**

2179 FOURTH ST., STE. 2-D • PO BOX 10789  
WHITE BEAR LAKE, MN 55110-0789

VOICE (651) 426-4410 • FAX (651) 426-4418

TOLL FREE 1-800-872-8613 • <http://www.csimmn.com>