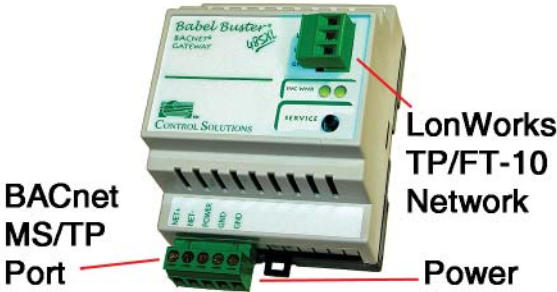




Babel Buster 485XL

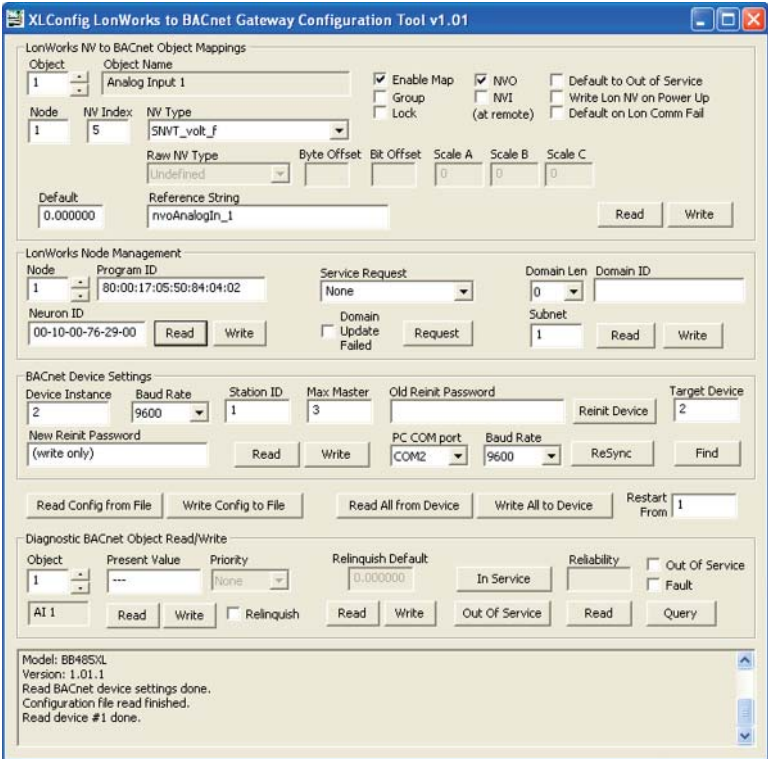
Installation Summary



Babel Buster 485XL
LonWorks® to BACnet MS/TP Gateway

Maps LonWorks Network Variables to

- 100 Analog Input objects
- 5 Analog Value objects
- 40 Binary Input objects
- 10 Binary Value objects



Connections

Communications:
Connect (+) terminal of gateway to (+) terminal of EIA485 network, and connect (-) to (-). If terminals are marked A and B, be aware there is much confusion about such marking. EIA standard says A is (-) while driver chip manufacturers say A is (+). If marked D0 and D1, D1 is (+). Connect GND to shield, common, or network ground.

LonWorks:
Connect the 2 LON terminals to the LonWorks network. These connections are not polarity sensitive. Connect the GND terminal next to LON to earth ground for proper ESD protection.

Power:
Connect POWER to +24 VDC or 24 VAC. Connect GND to negative of DC, or grounded side of AC.

Power ratings:
24VAC @ 100 mA (typical)
+12 to +24VDC @ 100 mA (typical)

Resources available at www.csimn.com:

- BACnet MS/TP Client for Windows Babel Buster 485XL configuration tool (free software download)
- Babel Buster 485XL BACnet Object definition documentation
- Online Help and step by step startup guide

www.csimn.com

Control Solutions, Inc.
2179 Fourth Street
White Bear Lake, MN 55110

(800) 872-8613 • support@csimn.com