

Babel Buster
X2



CONTROL SOLUTIONS, INC.
MINNESOTA

Bridges & Gateways Worth Remembering



Babel Buster **X2**

*Put polled, unbound
LonWorks devices on a
Modbus TCP/IP or SNMP
network.*

- 100BaseT Modbus/TCP
- TP/FT-10 LonWorks
- SNMP Agent

*Perfect solution for add-
ing external monitoring
to an existing LonWorks
network.*

Control Solutions' Babel Buster X2 is a fully configurable universal LonWorks to Modbus/TCP and SNMP gateway. The unique feature of the X2 is that it can access LonWorks data without network management requirements. This is especially useful where you want to interface a small number of LonWorks devices to a non-LonWorks network or the Internet. All necessary device management is included within the X2.

Babel Buster X2 includes both client and server sides of Modbus TCP. The Modbus master (client) can query other Modbus TCP devices. The Modbus slave (server) allows other devices or a PC to query Babel Buster.

LonWorks network variable data is translated to Modbus register data, and vice versa. Modbus polling rates are fully configurable. Register mapping and network variable types (SNVT) are fully configurable. A built in compiler for the PL/i language allows user programming of complex conversions between structured LonWorks variables and multiple Modbus registers. All Modbus registers are also accessible as SNMP MIB objects.

- Network Variables are polled, no binding required
- Up to 50 LonWorks devices supported
- Up to 62 Network Variables per device
- Embedded Web user interface
- Only software tool needed is a web browser
- 10/100 Ethernet supports Modbus TCP, SNMP
- LonWorks TP/FT-10 transceiver
- i.CanDoIt feature subset included
- Modbus TCP client and server
- SNMP agent with v2 trap generation
- Rule templates for trap configuration

Visit our web site for

- *Full details*
- *User Guide*
- *Pricing*
- *On-line Ordering*



www.csinn.com

651-426-4410 · 800-872-8613



CONTROL SOLUTIONS, INC.
MINNESOTA

*Babel Buster X2
LonWorks® to Modbus Gateway*

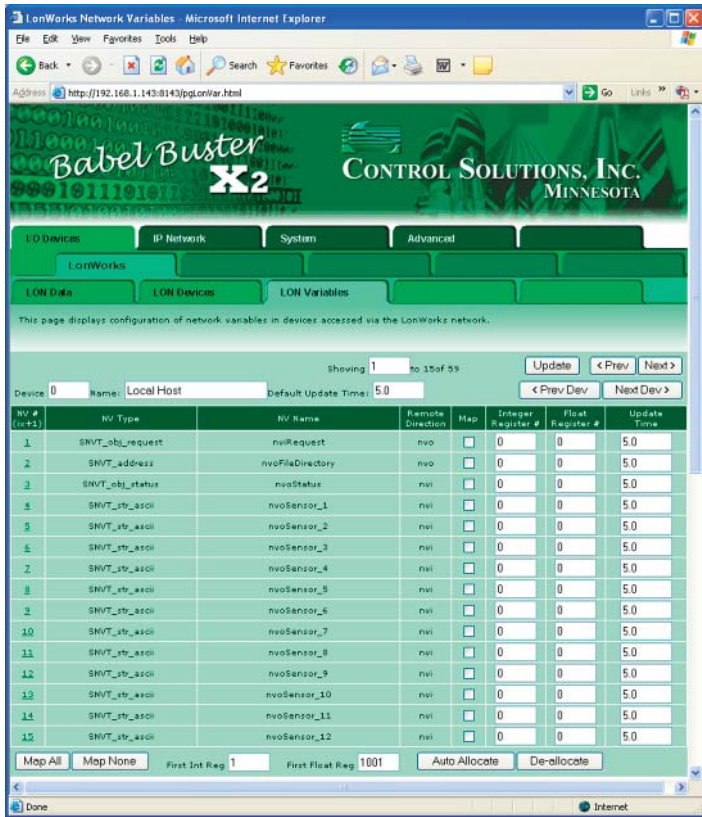


Babel Buster X2 includes an embedded web server. All configuration is done via its internal web pages. The X2 will look for service pin messages and import the XIF file from the device itself. From that, it will build a table of available variables which may be mapped to registers.

Translates any Modbus register to any supported LonMark SNVT variable and vice versa

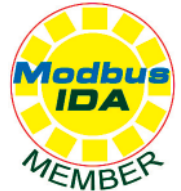
FEATURES COMMON TO ALL MODELS

- LonWorks TP/FT-10 to Modbus/TCP and SNMP Gateway
- Auto-sensing 10BaseT/100BaseT Ethernet
- Static IP, DHCP, Dynamic DNS
- Supports Modbus “coils”, input registers, and holding registers
- Single or double Modbus registers, signed, unsigned, IEEE 754
- Automatic conversion of scalar SNVT types
- User programmable handling of structured SNVT types
- SNVT types dynamically assignable via LonMaker
- Modbus (master) polling interval configurable per point
- Bidirectional communication between LonWorks and Modbus
- 3150 Neuron® Chip, 48K Flash memory, 10K RAM
- TP/FT-10 (FTT-10A) transceiver
- Powered by 10-30VDC or 12-24VAC 50/60 Hz
- Power Consumption: 0.1A @ 24VDC
- DIN rail mounting, 100mm H x 70mm W x 60mm D
- 10BaseT/100BaseT standard RJ-45 connector
- LED indicators for LonWorks, Modbus & Ethernet link status
- Pluggable screw terminal block for power & LonWorks network
- Operating temperature -40°C to +85°C, humidity 5% to 90%
- FCC Class A, CE Mark



Visit our web site for

- Full details
- User Guide
- Pricing
- On-line Ordering



www.csimn.com



CONTROL SOLUTIONS, INC.

2179 FOURTH ST., STE. 2-D • PO BOX 10789
WHITE BEAR LAKE, MN 55110-0789
VOICE (651) 426-4410 • FAX (651) 426-4418
TOLL FREE 1-800-872-8613

© 2007 Control Solutions, Inc. Echelon®, LonWorks®, LonBuilder®, NodeBuilder®, and Neuron® are US registered trademarks of Echelon Corporation. LonMark™ is a trademark of Echelon Corporation. Babel Buster® is a registered trademark of Control Solutions, Inc.