

## Babel Buster 2

MODBUS-WIRELESS  
NETWORK GATEWAY  
MODEL BB2-6040-XSC

CONTROL SOLUTIONS, INC.  
MINNESOTA

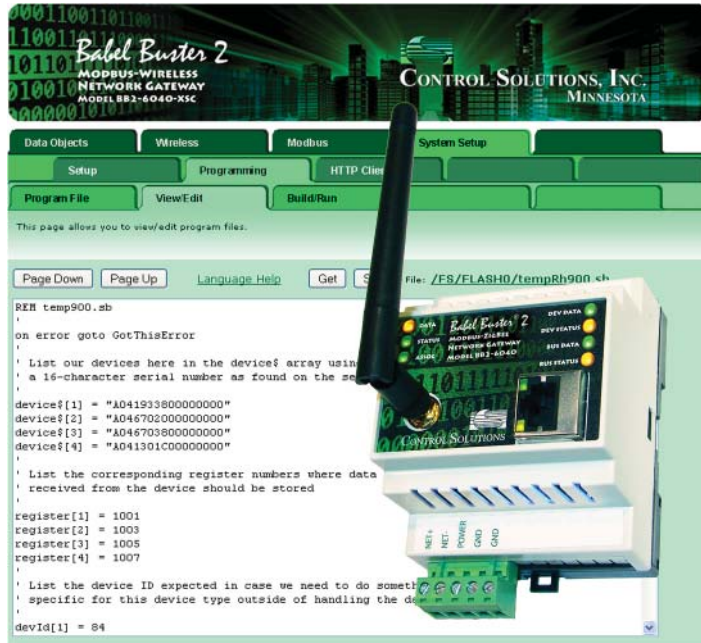
# 900 MHz Sensor Gateway for Modbus, SNMP and Web



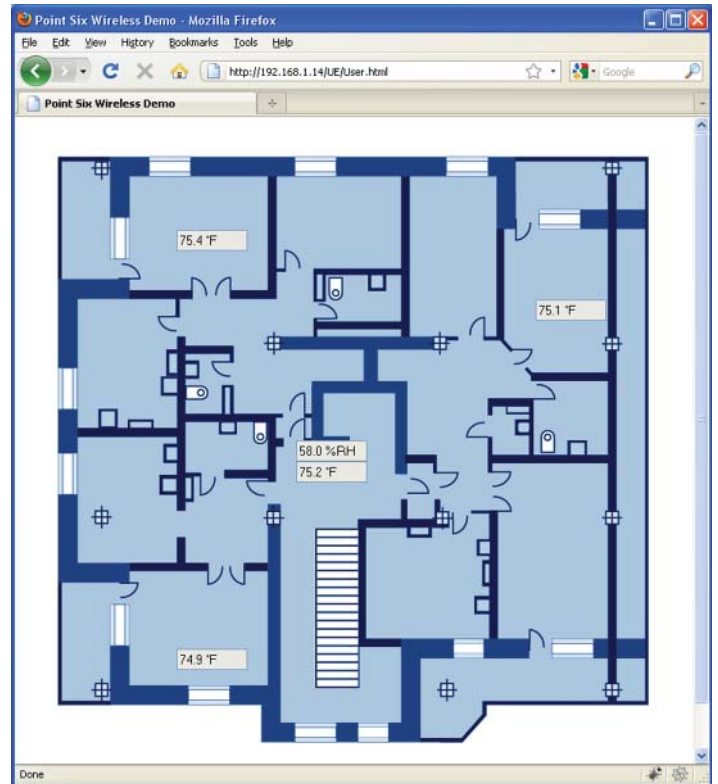
- *SNMP, Modbus RTU and Modbus TCP gateway for virtually unlimited number of 900 MHz sensors*
- *Modbus RTU master or slave, Modbus TCP client and server*
- *Access sensor data as SNMP MIB, send SNMP v2c Traps based on sensor data thresholds (XSC)*
- *Web portal support for alarm notification via SMS, email, voice calls using service such as LogMyData.com (XSCW)*
- *Highly customizable with Script Basic for manipulation of any combination of sensors, Free library of sample programs can be used as-is by simply substituting sensor serial numbers*
- *User customizable HTML web interface for viewing data remotely*

## BB2-6040-XSC FEATURES

- Modified version of BB2-6040 Modbus-ZigBee gateway
- Read 900 MHz wireless sensors via Modbus registers
- XBee XSC series 900 MHz radio
- Highly customizable using Script Basic
- Access radio API via comm port as Basic file I/O
- Parse any data string from any sensor
- Web portal support
- SNMP support, including v2c Traps
- Modbus RTU (RS-485) master or slave
- Modbus TCP (Ethernet 10/100) client and server
- User defined "virtual device" register map
- Supports user HTML "wrapper"
- Configure via web pages
- Flash file system with XML configuration files
- Field upgradeable firmware upload via ftp
- DHCP or static IP address
- Hardened EIA-485 transceiver for Modbus RTU
- Powered by 10-30VDC or 12-24VAC 50/60 Hz
- Power Consumption: 0.2A @ 24VDC
- DIN rail mounting, 100mm H x 70mm W x 60mm D (excluding antenna - RPSMA connector)
- Pluggable screw terminal block for power & RTU network
- Operating temperature -40°C to +85°C
- Humidity 5% to 90%
- FCC Class A, CE Mark



*Easily customize the user interface with any HTML authoring tool. Upload custom pages via FTP, and browse the BB2-6040-XSC.*



*Easily customize the wireless sensor interface using Script Basic with the built-in compiler/interpreter that comes with the Babel Buster BB2-6040-XSC*

Control Solutions' Babel Buster® BB2-6040-XSC is a Modbus client/server device that functions as a 900 MHz wireless sensor gateway. After adding the Script Basic parsing program, data from wireless sensors will appear as Modbus registers via Modbus TCP or Modbus RTU. The Basic program has full access to the wireless modem API with AT command set for wireless applications.

The BB2-6040-XSC operates primarily in Listen mode, simply waiting for wireless devices to report in. When the wireless devices do report in, the BB2-6040-XSC searches its known device list to see if the reported data should be saved as a local Modbus register.

The collection of Modbus registers found in the BB2-6040-XSC will maintain the most recently received wireless data. Other Modbus masters may query the BB2-6040-XSC server to obtain that most recent data accessed as a holding register. An SNMP manager may also query sensor data via SNMP Get.

The BB2-6040-XSC may also function as a master, and will use holding register writes to share data with Modbus slaves. The BB2-6040-XSC therefore has the ability to transfer data between wireless devices and other Modbus devices that operate as a slave only.

Visit our web site for

- Full details
- User Guides & Software Downloads
- Pricing & On-line Ordering

[www.csimn.com](http://www.csimn.com)



**CONTROL SOLUTIONS, INC.**

980 E. BERWOOD AVE., SUITE 100 • PO BOX 10789

ST. PAUL, MN 55110-0789

VOICE (651) 426-4410 • FAX (651) 426-4418

TOLL FREE 1-800-872-8613

© 2010 Control Solutions, Inc. Babel Buster® is a registered trademark of Control Solutions, Inc. Modbus is a registered trademark of Modbus Organization, Inc. ZigBee® is a registered trademark of ZigBee Alliance.