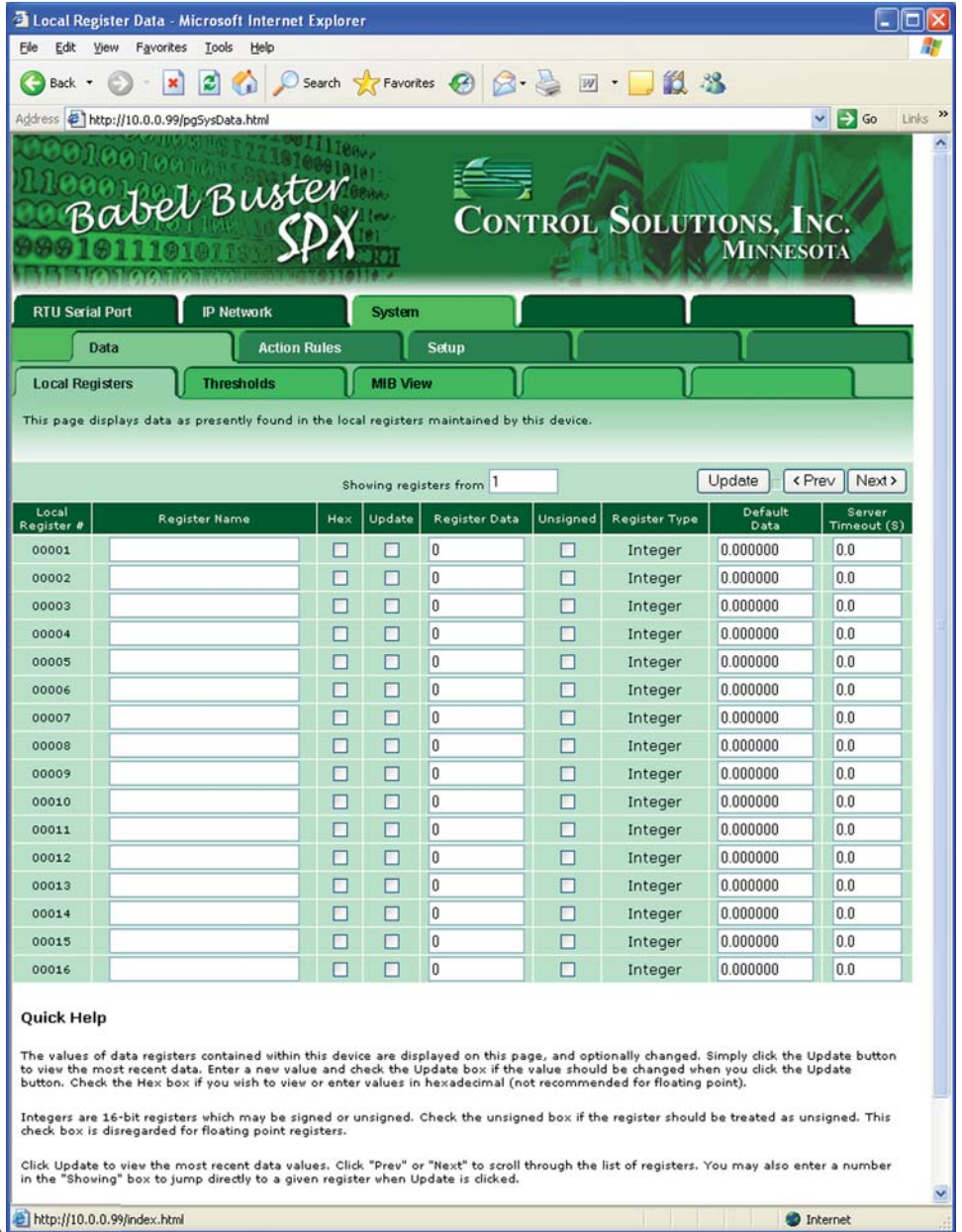




Babel Buster SPX

Connect Modbus/RTU to Modbus/TCP and SNMP over 10/100 Ethernet

- Configure via web pages
- Flash file system with XML configuration files that can be uploaded or downloaded
- User programmable event thresholds for alarm reporting
- SNMP Trap generation
- RTU serial master or slave
- TCP client and server (master and slave concurrently)
- Online help
- User defined "virtual device" register map on server side
- Password protection for web log-on, ftp and telnet log-on
- Field upgradeable firmware upload via ftp
- DHCP or static IP address
- Maps up to 1000 16-bit registers plus 500 32-bit floating point registers



- Visit our web site for
- Full details
 - User Manuals
 - Pricing
 - On-Line Ordering



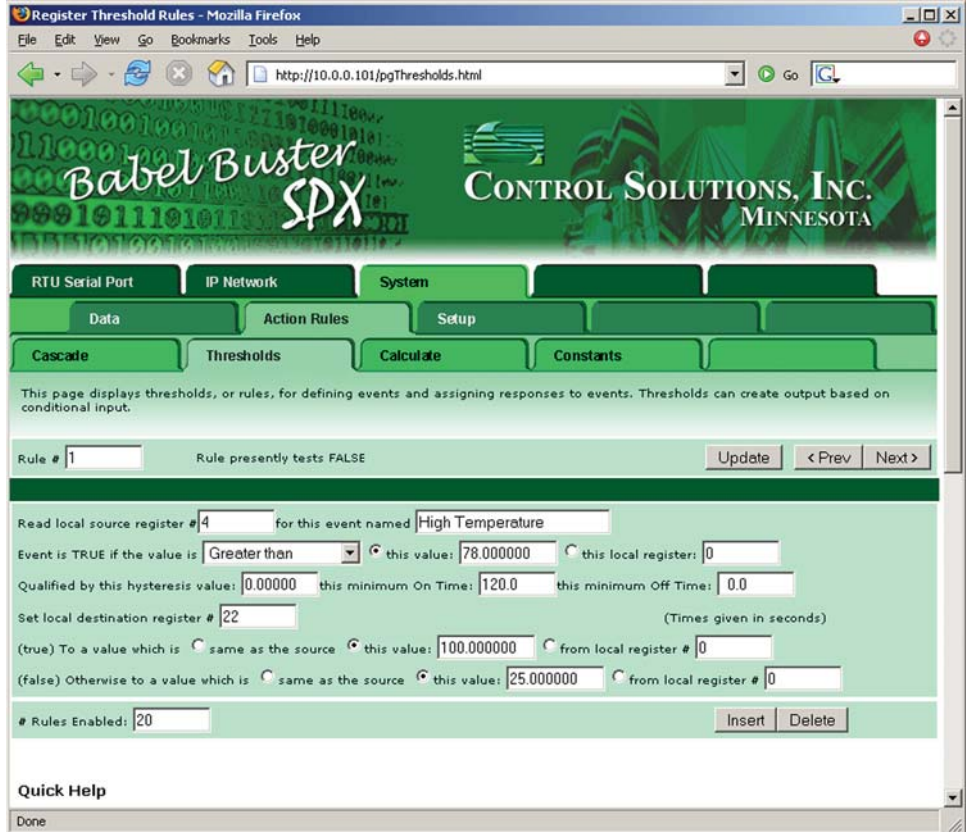
www.csimn.com
651-426-4410 · 800-872-8613



Babel Buster SPX

Babel Buster SPX is more than a protocol translator. It is a self contained server that collects and distributes data according to the rules you create. You can even use Babel Buster as an alarm notification device.

The primary applications for Babel Buster SPX are serial to Ethernet conversion of Modbus devices, and SNMP access to serial or Ethernet Modbus devices. The Modbus RTU port can operate as master or slave. The Modbus TCP interface can operate as master and slave at the same time. Babel Buster SPX is an SNMP agent only.



SPECIFICATIONS

- Modbus RTU RS-485 (only)
- Modbus TCP over Ethernet 10/100BaseT
- SNMP get/set access to all data points
- SNMP trap generation, user programmable criteria
- 1000 16-bit registers
- 500 32-bit floating point registers
- Powered by 9 to 30VDC @ 0.37A to 0.11A
- FCC Class A, CE Mark
- Operating temperature -40°C to +85°C; Humidity 5% to 90%

Visit our web site for

- Full details
- User Manuals
- Pricing
- On-Line Ordering



www.csimn.com



CONTROL SOLUTIONS, INC.

980 E. BERWOOD AVE, SUITE 100 • PO BOX 10789
 ST. PAUL, MN 55110-0789
 VOICE (651) 426-4410 • FAX (651) 426-4418
 TOLL FREE 1-800-872-8613