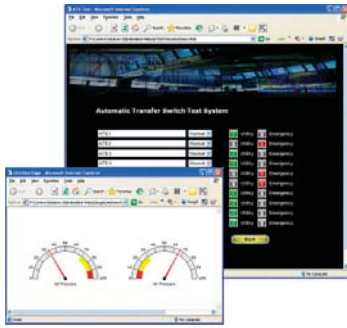




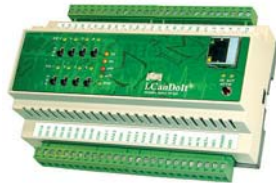
Embedded Web Servers with Programmable I/O



i.CanDoIt®
Embedded
Web Servers
with I/O



AddMe Jr. Server (AMJ14IP)
12 A/UI, 2 DO
Modbus RTU gateway built in
10/100 Ethernet, Modbus TCP, SNMP
Advanced i.CanDoIt features
(BACnet IP version also available)



AddMe III Server (AM3IPMB)
18 A/UI, 2 PI, 4 AO, 8 DO
Modbus RTU gateway built in
10/100 Ethernet, Modbus TCP, SNMP
Advanced i.CanDoIt features



AddMe III Server (AM3IPBN)
18 A/UI, 2 PI, 4 AO, 8 DO
BACnet IP Server & I/O with
COV subscription, BACnet IP client,
Advanced i.CanDoIt features



i.Board Server (IB100)
8 A/UI, 2 DO
10/100 Ethernet, Modbus TCP, SNMP
Advanced i.CanDoIt feature subset

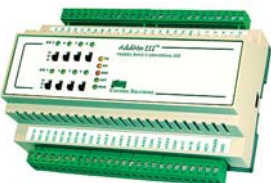


i.Board Server (IB100)
8 A/UI Universal Inputs
Modbus RTU Master
10/100 Ethernet, Modbus TCP, SNMP
Advanced i.CanDoIt feature subset

Modbus I/O

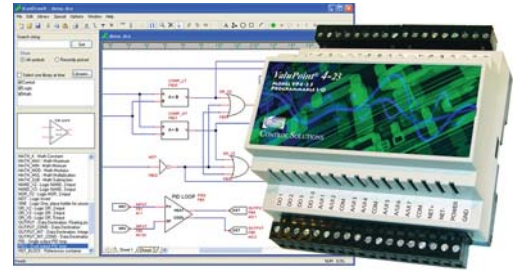


AddMe Lite (AMJ14SM)
12 A/UI, 2 DO
Modbus RTU (RS485) slave I/O
Field programmable



AddMe III (AM3SM)
18 A/UI, 2 PI, 4 AO, 8 DO w/HOA
Modbus RTU (RS485) slave I/O
Field programmable

BACnet Programmable I/O



ValuPoint® and
i.CanDrawIt®

ValuPoint® VP4-23 MS/TP Controller

- 14 A/UI (0-10V, thermistor, dry contact)
- 6 DO (relay), 3 AO (4-20mA)
- Scheduling, data logging, alarm monitoring, COV
- Astronomical and battery backed real time clock
- 2MB non-volatile log file memory
- Freely programmable, graphical programming
- MS/TP client for peer to peer communication



AddMe Lite (AMJ14SB)
12 A/UI, 2 DO
BACnet MS/TP slave I/O
Field programmable



AddMe III (AM3SB)
18 A/UI, 2 PI, 4 AO, 8 DO w/HOA
BACnet MS/TP slave I/O
Field programmable

LonWorks I/O



AddMe Lite (AMJ14LN)
12 A/UI, 2 DO
LonWorks TP/FT-10 slave I/O
Field programmable
LonMark Certified



AddMe III (AM3LN)
18 A/UI, 2 PI, 4 AO, 8 DO w/HOA
LonWorks TP/FT-10 slave I/O
Modbus RTU gateway (master)
Field programmable
LonMark Certified



AddMe II (AM2MX30)
16 A/UI, 2 PI, 4 AO, 8 DO
LonWorks TP/FT-10 slave I/O
UL916 Listed
LonMark Certified



Babel Buster Family

The list illustrated here is representative of the many gateways we offer. Visit www.csimm.com for a full list.



Modbus -> BACnet IP
Babel Buster BB2-7010



Connects Modbus RTU/TCP devices to BACnet IP network, up to 1500 BACnet objects (analog, binary, multi-state) BBMD, COV support.



Modbus -> BACnet MS/TP
Babel Buster BB2-3010



Connects Modbus RTU devices to BACnet MS/TP network or vice versa, up to 300 BACnet objects fully configurable, COV support, MS/TP client.



Modbus <-> SNMP
Babel Buster SPX (BBSPX)

Connects Modbus RTU devices to SNMP and vice versa, used most often in data centers.



Modbus -> LonWorks
Babel Buster 485 (BB485)

Connects Modbus RTU RS-485 devices to LonWorks TP/FT-10, can be Modbus master or slave, up to 58 LonWorks SNVT network variables.



Modbus -> LonWorks
Babel Buster 232 (BB232)

Connects Modbus RTU RS-232 devices to LonWorks TP/FT-10, can be Modbus master or slave, up to 58 LonWorks SNVT network variables.



LonWorks -> Modbus TCP
Babel Buster X2 (BBX2)

Connects LonWorks TP/FT-10 to Modbus TCP, polled/unbound, up to 20 LonWorks nodes, up to 62 network variables per node.



Modbus RTU -> Modbus TCP
Modbus RTU -> SNMP
Babel Buster SP (BBSP)

Connects Modbus RTU RS-485 devices to Ethernet, can be Modbus master or slave, max 1000 registers.

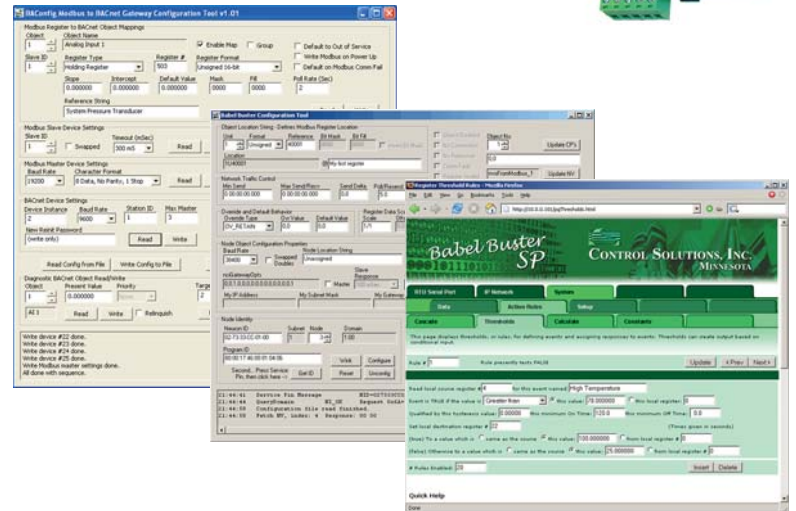


Modbus -> GPRS
i.Report (AM3GPRS)

Connects Modbus RTU devices and discrete I/O to cellular GPRS.

Babel Buster 2

The first of the Babel Buster 2 family of network gateways is here and ready to ship. More are on the way, including the BB2-7040 pictured here. This gateway provides BACnet IP and BACnet MS/TP access to ZigBee devices. The BB2-7040 is fully configurable, yet completely programmable using Script Basic to virtually guarantee access to anything ZigBee.



Our PC based configuration software is available for free download from our web site. These communicate via the protocol native to the product, whether BACnet, LonWorks or Modbus. Network interfaces or adapters for your PC are necessary for devices that do not have a web interface.

Technical info: www.csimm.com

Get complete product details, data sheets, web demos, software downloads, PICS and XIF files, and more.

Pricing info: www.shopcsimm.com

We sell direct and ship world wide. To see wholesale pricing, register at www.shopcsimm.com. Wait for the confirmation email, then log in again. Your wholesale pricing will automatically be displayed when logged in with wholesale registration (retail prices listed otherwise).

Quotes: Get a formal quote generated automatically at shopcsimm.com. Simply add the items of interest to your shopping cart, and when you check out, select "Quote Only" as payment method.



CONTROL SOLUTIONS, INC.

980 E. BERWOOD AVE, SUITE 100 • PO BOX 10789
ST. PAUL, MN 55110-0789
VOICE (651) 426-4410 • FAX (651) 426-4418
TOLL FREE 1-800-872-8613