



**LogMyData® Data Manager  
Remote Monitoring for Modbus**

*Applications Include*

- Alarm Monitoring for Power Backup Systems
- Alarm Monitoring for Pumps, Lift Stations, Land Fills, other Utilities
- Preventive Maintenance - Automatic Notifications of Maintenance Due
- Utility Usage Logging
- Performance Analysis, Cycle Time Tracking

**LogMyData Data Manager** Model DM2-MOD is a web enabled device that automatically communicates with one or more Modbus devices to obtain data. This data is constantly checked against user set thresholds to see if an alarm condition exists. If there is an alarm condition, the DM2-MOD immediately sends an event notification to the server (e.g. LogMyData.com). If there are no alarms, the DM2-MOD will simply provide periodic reports of data points to the server.

The DM2-MOD functions as a Modbus RTU master or slave (user configurable), and Modbus TCP client (master) and Modbus TCP server (slave) concurrently. The DM2-MOD may poll one or more Modbus slaves, or the DM2-MOD may be the slave polled by a PLC or other Modbus master device.

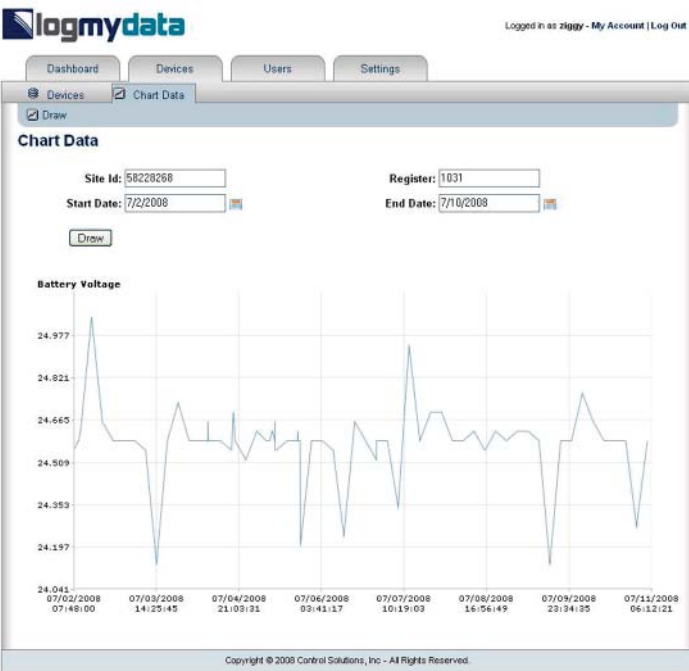
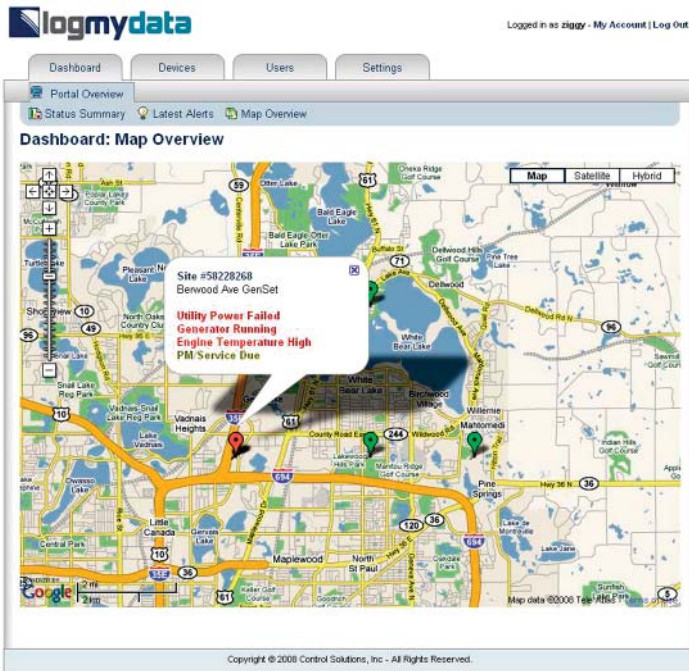
**FEATURES**

- Access any standard Modbus register via Web Portal
- User programmable threshold rules for alarm notifications
- DM2-MOD is Modbus RTU master or slave
- DM2-MOD is also Modbus TCP client and server
- Bidirectional communication between Web Server and Modbus
- Supports Modbus “coils”, input registers, holding registers
- Single or double Modbus registers, signed, unsigned, IEEE 754
- Modbus register mapping configured via web interface
- Modbus registers may be scaled (x10, x100, x0.1, x0.01, etc.)
- Modbus (master) polling interval configurable per point
- EIA-485 transceiver for Modbus RTU
- 10/100BaseT Ethernet for Modbus TCP, Internet
- Powered by 10-30VDC or 12-24VAC 50/60 Hz
- Power Consumption: 0.1A @ 24VDC
- DIN rail mounting, 100mm H x 70mm W x 60mm D
- Pluggable screw terminal block for power & RTU network
- Operating temperature -40°C to +85°C; Humidity 5% to 90%



The DM2-MOD is designed especially for web servers like the LogMyData.com web portal. For more information about the web portal available to you immediately with the DM2-MOD, visit [www.logmydata.com](http://www.logmydata.com).

Built-In Web Server  
for Configuration and Diagnostics



- Visit our web site for
- Full details
  - User Guides & Software Downloads
  - Pricing
  - On-line Ordering

[www.csimn.com](http://www.csimn.com)



**CONTROL SOLUTIONS, INC.**

980 E. BERWOOD AVE., SUITE 100 • PO BOX 10789  
ST. PAUL, MN 55110-0789  
VOICE (651) 426-4410 • FAX (651) 426-4418  
TOLL FREE 1-800-872-8613

© 2008 Control Solutions, Inc. LogMyData® is a registered trademark of Control Solutions, Inc. Modbus is a registered trademark of Schneider Electric, Inc.