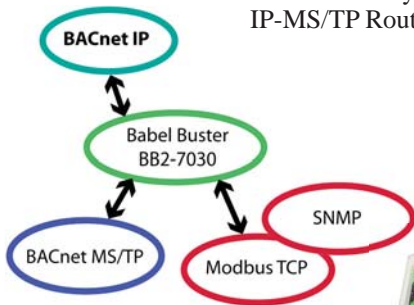


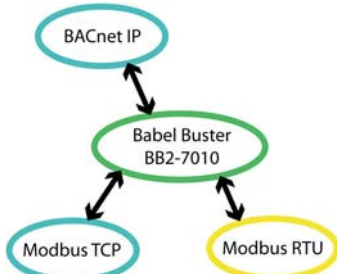


Babel Buster® BB2-7030
BACnet Gateway and
IP-MS/TP Router

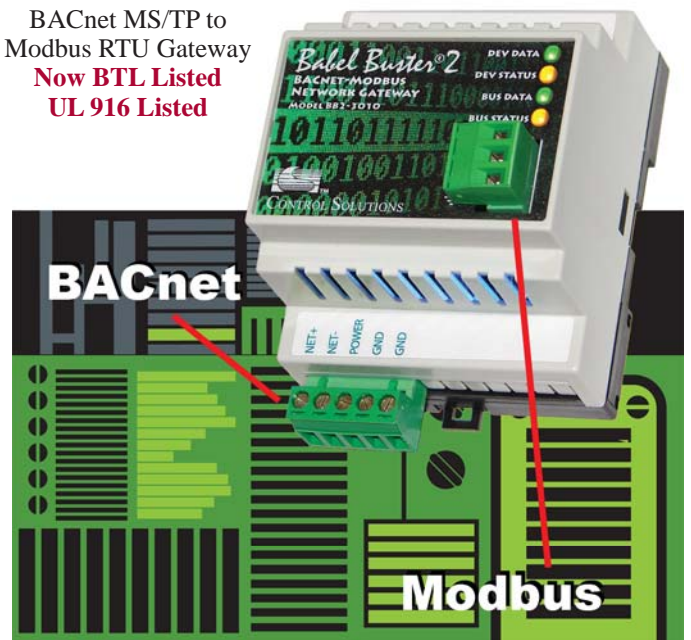
Babel Buster® Network Gateways...
... about as easy and inexpensive as it gets.



Babel Buster® BB2-7010
BACnet IP to
Modbus TCP, RTU Gateway



Babel Buster® BB2-3010
BACnet MS/TP to
Modbus RTU Gateway
Now BTL Listed
UL 916 Listed





Babel Buster Family

The list illustrated here is representative of the many gateways we offer. Visit www.csimn.com for a full list.



BACnet MS/TP -> BACnet IP Babel Buster BB2-7030

Full BACnet router connects MS/TP to BACnet IP, plus Modbus TCP, SNMP, HTTP Client. Optionally map multiple MS/TP devices as single IP device.



Modbus -> BACnet IP Babel Buster BB2-7010

Connects Modbus RTU/TCP devices to BACnet IP network, up to 1500 BACnet objects (analog, binary, multi-state) BBMD, COV support.



Modbus -> BACnet MS/TP Babel Buster BB2-3010

Connects Modbus RTU devices to BACnet MS/TP network or vice versa, up to 300 BACnet objects fully configurable, COV support, MS/TP client.



Modbus <->SNMP Babel Buster SPX (BBSPX)

Connects Modbus RTU devices to SNMP and vice versa, used most often in data centers.



Modbus -> LonWorks Babel Buster 485 (BB485)

Connects Modbus RTU RS-485 devices to LonWorks TP/FT-10, can be Modbus master or slave, up to 58 LonWorks SNVT network variables.

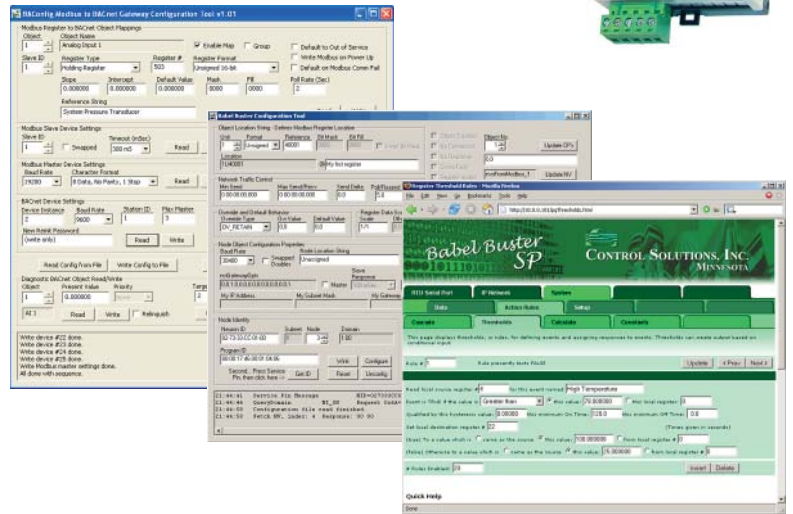


ZigBee® Sensors BACnet® to ZigBee® Gateways

Babel Buster BB2-7040 BACnet to ZigBee Gateway along with the ZB series wireless sensors from Control Solutions allows you to create a wireless sensor network interfaced to BACnet IP or BACnet MS/TP.

Babel Buster 2

The Babel Buster 2 family of network gateways continues to grow. The BB2-7040 pictured here provides BACnet IP and BACnet MS/TP access to ZigBee devices. The BB2-7040 is easily configurable for Control Solutions sensors, yet completely programmable using Script Basic to access anything ZigBee.



Our PC based configuration software is available for free download from our web site. These communicate via the protocol native to the product, whether BACnet, LonWorks or Modbus. Network interfaces or adapters for your PC are necessary for devices that do not have a web interface.

Technical info: www.csimn.com

Get complete product details, data sheets, web demos, software downloads, PICS and XIF files, and more.

Pricing info: www.shopcsimn.com

We sell direct and ship world wide. To see wholesale pricing, register at www.shopcsimn.com. Wait for the confirmation email, then log in again. Your wholesale pricing will automatically be displayed when logged in with wholesale registration (retail prices listed otherwise).



CONTROL SOLUTIONS, INC.

980 E. BERWOOD AVE., SUITE 100 • PO BOX 10789
ST. PAUL, MN 55110-0789
VOICE (651) 426-4410 • FAX (651) 426-4418
TOLL FREE 1-800-872-8613

© 2012 Control Solutions, Inc. i.CanDoll®, i.CanDrawIt®, ValuPoint®, Babel Buster®, AddMe®, LogMyData® are registered trademarks of Control Solutions, Inc. BACnet® is a registered trademark of American Society of Heating, Refrigerating and Air-Conditioning Engineers (ASHRAE). Modbus® is a registered trademark of Modbus Organization. LonWorks® is a registered trademark of Echelon Corp. ZigBee® is a registered trademark of ZigBee Alliance.