

## BACnet MS/TP Configuration Tool



CONTROL SOLUTIONS, INC.  
MINNESOTA



### BACnet MS/TP Tool Box Model MTX-1

- *Reliable MS/TP to 76800 Baud*
- *Web Based User Interface*
- *Configure Gateways or I/O*
- *XML Configuration Files*
- *Diagnostic Object Access*
- *Program Download Support for Freely Programmable Devices*

The Model MTX-1 Tool Box is a web based device. This means that the only thing you need to configure MS/TP devices is a PC with a browser. The Tool Box eliminates the need for a USB to serial adapter, or an RS232 to RS485 adapter.

The Tool Box is field upgradeable. When more MS/TP devices become available, you simply use FTP to upload a new firmware image to your Tool Box.

The Tool Box has storage for approximately 200K of configuration files. You can upload and download configuration files to your PC. Once you have created a new configuration, save the XML file, then download to your PC. If you have configuration files created using the original software tool, you can upload these to your Tool Box. If you have a device but no file for it, read the configuration from the device and then save an XML file to replicate the device.

The Model MTX-1 Control Solutions Tool Box is an MS/TP device configuration and diagnostic tool for Control Solutions MS/TP devices, including MS/TP gateways and network I/O. We offer free software based configuration tools for all of our non-web based products. Most of the time these tools work pretty well. MS/TP is the one exception that pushes Windows and PC hardware right to, and a little past, the limits. If the PC software based MS/TP tools are working for you, keep using them. If you have trouble running MS/TP reliably on your PC, the Tool Box will interest you. We could go on fixing Windows drivers, but there are some PC hardware limitations that no driver will ever fix. We decided to invest in a better "fix".

Even if you are not having reliability problems with the free MS/TP software on Windows, PC hardware does not support 76800 baud at all. The Tool Box allows you to configure devices at 76800 baud. The Tool Box is also programmed to behave as just another MS/TP device on the network, meaning you can check configuration or perform diagnostics without removing devices from the network. For example, you can view Modbus RTU device error counts from the Tool Box while on a live network.

Visit our web site for

- *Full details*
- *User Guides & Software Downloads*
- *Pricing*
- *On-line Ordering*

[www.csimn.com](http://www.csimn.com)

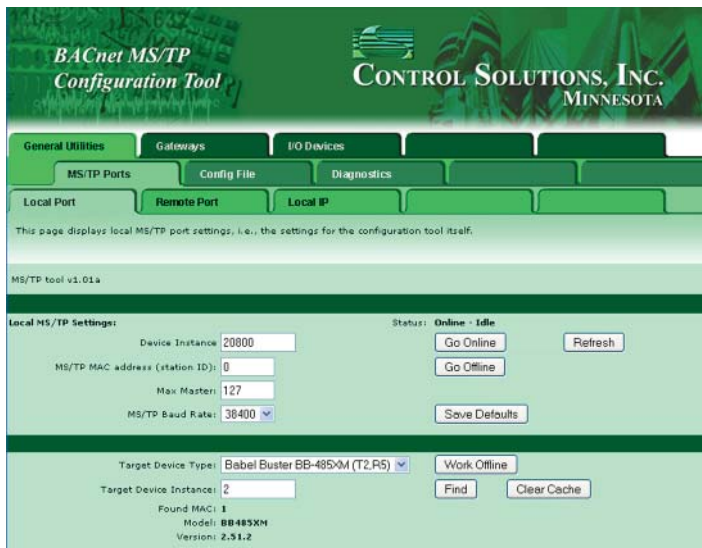
651-426-4410 • 800-872-8613

# BACnet MS/TP Configuration Tool



**CONTROL SOLUTIONS, INC.**  
MINNESOTA

The only tool you need to begin configuration and diagnostics for any Control Solutions BACnet MS/TP device is this tool and your PC's browser. No more USB to serial adapters, no more RS232 to RS485 adapters. And this tool can run at 76800 baud, something your PC can't do at all.



## FEATURES

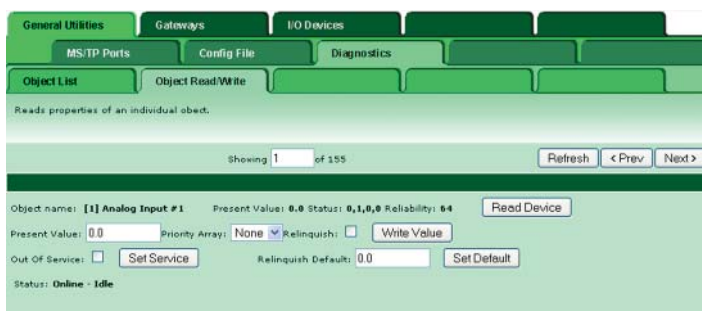
- Configures all current Control Solutions MS/TP devices
- Field upgradeable to support future devices
- XML configuration file upload/download
- 10/100BaseT web server
- BACnet MS/TP RS-485 master/slave
- Baud rates 9600, 19200, 38400, 76800
- Powered by 10-30VDC or 24VAC
- Power Consumption:  
 --- 0.15A @ 24VDC max.
- 38mm H x 52mm W x 103mm D
- Operating temperature -40°C to +85°C
- Humidity 5% to 90%
- FCC Class A, CE Mark



Visit the Tools page at [www.csimn.com](http://www.csimn.com) to find a short Flash video on getting started with Control Solutions' MS/TP Tool Box.

Visit our web site for

- Full details
- User Guides & Software Downloads
- Pricing
- On-line Ordering



[www.csimn.com](http://www.csimn.com)



**CONTROL SOLUTIONS, INC.**

980 BERWOOD AVE, SUITE 100 • PO BOX 10789

ST. PAUL, MN 55110-0789

VOICE (651) 426-4410 • FAX (651) 426-4418

TOLL FREE 1-800-872-8613

© 2009 Control Solutions, Inc. Babel Buster® is a registered trademark of Control Solutions, Inc. BACnet® is a registered trademark of American Society of Heating, Refrigerating and Air-Conditioning Engineers, Inc.