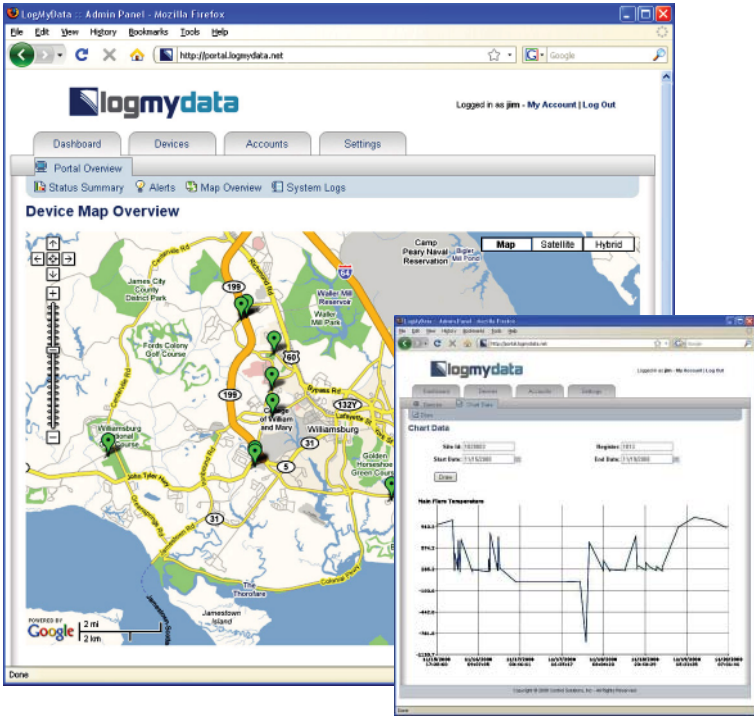


**i.Report
Satellite/Cellular
Global Remote
Telemetry**



Control Solutions' i.Report™ Remote Telemetry Units and Control Solutions' LogMyData® web portal subscription services offer a complete end-to-end solution for your remote monitoring applications.

Connectivity options include cellular, satellite, or wired Internet. Notifications are sent via text message, email, and automated voice call. Secure central servers log your data and notification history.

LogMyData® Web Portal Features

- User configurable alarms and notification messages
- Multiple users and multiple user groups for notifications
- Notification via email, text message, voice phone calls
- Alert escalation when alert requires acknowledgement
- Map and annunciator views of system summary
- Daily status reports and online history log
- Notification of unresponsive devices
- Data collection for trending, data export, online graphs
- Connect via wired Internet, cellular GSM/GPRS, satellite

The **LogMyData® Web Portal** provides a central site to monitor all of your remote sites. Access the central site from anywhere in the world. LogMyData will send you emails, text messages to your cell phone, or even notify you with a voice phone call, when an event you want to know about has occurred. LogMyData also logs trends and history.



Features common to VP4-2090 and VP3-2290

- Remote monitoring and data logging
- GSM/GPRS or CDMA cellular data modem
- Programmable soft PLC included
- Modbus RTU master/slave port
- J1939 Engine monitoring port
- 2GB data flash for event and data logging
- Store and forward logging
- Battery backed real time clock for timestamps
- Over the air control
- Over the air firmware update
- Internal temperature sensor
- Hardened RS-485 serial port (Modbus RTU)
- CAN 2.0b communications port (J1939)
- USB port (connects to laptop for service)
- 32-bit ARM7 processor, 512K Flash
- 2GB data flash for event/data logging
- 128K EEPROM for configuration storage
- Operates from 10-30VDC or 12-24VAC
- Operating Temperature 0-70°C (-30 to +70°C optional)

Features unique to VP4-2090

- Total of 20 I/O Points
- 16 Universal inputs
 - 0-10VDC, thermistor, dry contact
 - 4-20mA with external resistor
 - 16-bit sigma-delta converter
 - Continuously self calibrating
- 2 Fixed analog inputs, 0-30VDC input range
- 2 Discrete outputs, 30VDC 1A open drain FET
- Cellular and satellite connectivity options:
 - Satellite only
 - Cellular only
 - Cellular with satellite backup
- GPS tracking and geo-fencing for mobile apps
- LEO Satellite transceiver (Iridium)
- Garmin GPS receiver
- NEMA 4X, IP66, IP68 Enclosure

Features unique to VP3-2290

- Total of 22 I/O Points
- 12 Universal inputs
 - 0-10VDC, thermistor, dry contact
 - 0-30VDC range on 2 inputs for battery monitoring
 - 4-20mA with external resistor
 - 16-bit sigma-delta converter, self calibrating
- 8 Discrete inputs
 - Voltage sense or dry contact closure to ground
 - Pulse count capability on 2 inputs
- 2 Discrete outputs
 - 30VDC 1A open drain FET
- DIN rail mounting, 100mm H x 105mm W x 60mm D
- Pluggable screw terminal blocks



Control Solutions' i.Report™ Global Remote Telemetry Units are ideal for demanding remote alarm monitoring and data logging with optional GPS tracking. Connectivity options include both cellular and satellite. The model VP4-2090 can operate on cellular only, satellite only, or cellular with satellite backup for mobile applications. The built-in Garmin GPS receiver provides tracking data for mobile applications.

The i.Report™ includes up to 22 physical I/O points. Sensor inputs are universally configurable as analog, temperature (thermistor), or discrete/dry contact inputs. Certain inputs have a 30V range for directly monitoring batteries. The i.Report™ also includes discrete outputs for functions such as generator start on command.

The i.Report™ includes a Modbus RTU port which may operate in master or slave mode. The i.Report™ may poll multiple Modbus slaves to greatly expand I/O capability. The i.Report™ may also operate as a slave allowing a PLC in a larger system to write data to the i.Report™.

The i.Report™ includes a CAN/J1939 port for applications such as engine monitoring. The i.Report™ can receive any standard J1939 message, including transport protocol. The i.Report™ can initiate data read requests. The i.Report™ can transmit J1939 messages sending data provided by the web portal or derived internally. Message construction is completely configurable, and transport protocol is supported in both directions.

The i.Report™ supports store and forward logging. Data will be reported at regular intervals via cellular when coverage is available. When a mobile unit leaves cellular coverage, the i.Report™ will log data to its internal 2GB data flash, and upload stored data when service is found. Meanwhile, critical alarms and data points will be reported via satellite (if available) while non-critical events and log data are stored for later forwarding.

The i.Report™ includes a field programmable soft PLC. Control Solutions' i.CanDrawIt® graphical programming tool is used to easily create programs. Connect a PC via the i.Report's USB service port for live program debugging.

www.csimn.com
www.logmydata.com



CONTROL SOLUTIONS, INC.

980 E. BERWOOD AVE., SUITE 100 • PO BOX 10789

ST. PAUL, MN 55110-0789

VOICE (651) 426-4410 • FAX (651) 426-4418

TOLL FREE 1-800-872-8613