

i.CanDoIt® BAS-700 ReMOTE I/O

- Access all I/O points as Modbus registers
- Access all I/O points as SNMP MIB objects
- Simple alarm setup for Trap notification
- Rule based I/O responses to thresholds
- Simple linked I/O with simple logic
- Embedded Script BASIC compiler/interpreter

- Link to other Modbus devices
- Includes both Modbus/TCP client and server
- Optional Modbus RTU master for more I/O
- Embedded web server for configuration
- FTP server for XML configuration file upload
- Telnet server for user account maintenance

The only tool you need for configuring this remote I/O, alarms and logic, and linking it to other systems, is the web site contained within the device itself.

We created the BAS-700 building block approach to let you create your own remote I/O package. You simply plug together the modules you need! Packaging is simple and economical with cut-to-size snap track. Creating a custom system is easy and economical with the BAS-700 series.

We created the i.CanDoIt® software to make the BAS-700 hardware simple to configure, flexible, and powerful. No special tools are needed to configure or program this system. You can easily configure very simple remote I/O. If you're ambitious, you can write an entire application program to do control algorithms or complex alarm monitoring. The programming tool is included in the web interface.

Visit our web site for a complete online demo of the i.CanDoIt web interface and hardware details.

www.csimn.com

Board	Type	Option Code	Register Range	Extended Register Range
#1	BAS-722	0	00001-00002	01001-01003
#2	BAS-714	0	00003-00006	01005-01011
#3	BAS-734	0	00007-00010	01013-01019
#4	BAS-722	0	00011-00012	01021-01023
#5	BAS-742	0	00013-00014	01025-01027
#6	BAS-7030	105020	00015-00064	01029-01067
#7	None	0	00000-00000	00000-00000
#8	None	0	00000-00000	00000-00000

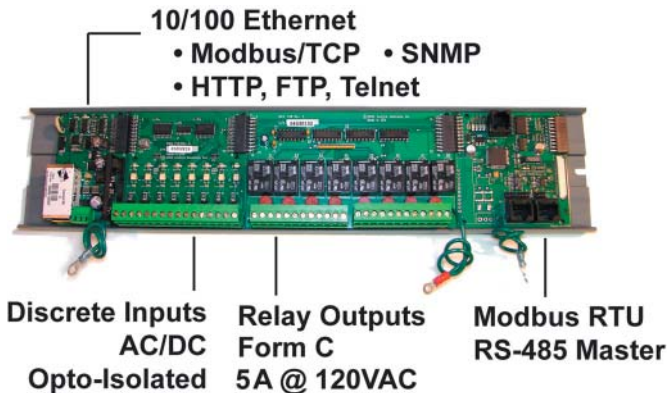
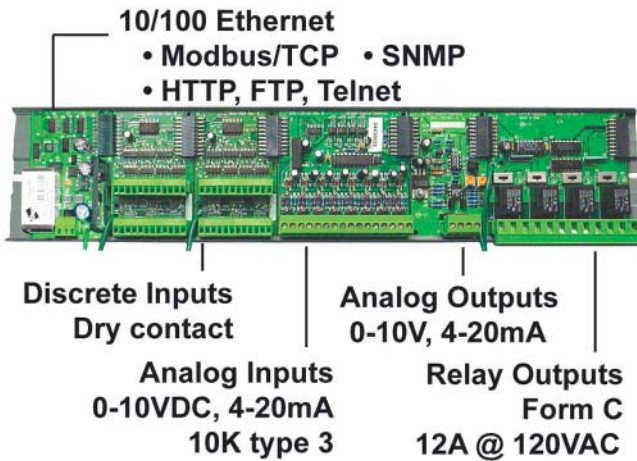
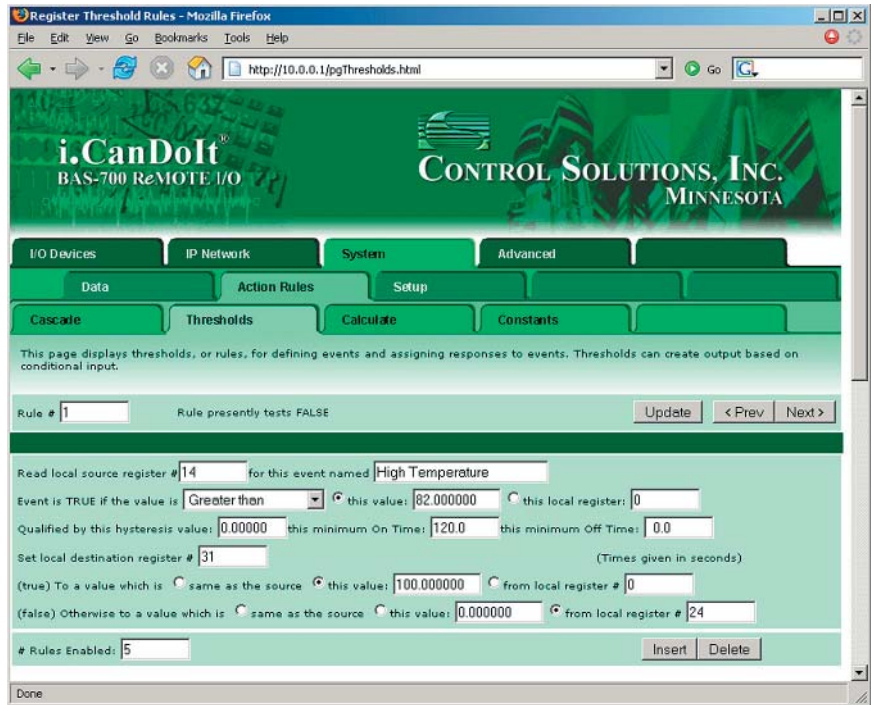
Click Reconfigure button to erase the present configuration and set defaults using the new board list shown. All present configuration will be lost. Go to System->Config-File to load new configuration file.

i.CanDoIt® ReMOTE I/O

i.CanDoIt® BAS-700 ReMOTE I/O consists of a BAS-7050 Ethernet processor module plus one to eight I/O modules from the BAS-700 series. Any of the BAS-700 series analog and discrete I/O modules can be plugged into the BAS-7050 processor to give your i.CanDoIt® system from 2 to 24 outputs, 4 to 192 inputs, or a mix somewhere in between.

All configuration is done through the embedded web server. Programming can consist of filling in the blanks in rule templates, or writing a full blown program in Basic. Or use a combination of rules and programming.

i.CanDoIt® is field upgradable. As new firmware with additional features becomes available, you can immediately take advantage of those new features. We do not charge additional money for upgrades!



Visit our web site from time to time to see if we have added features you want. Scheduling and data logging are coming soon. If you have suggestions for features you would like, please go to our web site to contact us with your feedback. If you find it in our product line, it's there because somebody told us they wanted it!

Visit our web site for

- Full details
- User Manuals
- Pricing
- On-line Ordering



www.csimn.com



CONTROL SOLUTIONS, INC.

2179 FOURTH ST., STE. 2-D • PO BOX 10789
 WHITE BEAR LAKE, MN 55110-0789
 VOICE (651) 426-4410 • FAX (651) 426-4418
 TOLL FREE 1-800-872-8613

i.CanDoIt® is a registered trademark of Control Solutions, Inc., Minnesota, USA.
 Copyright 2006 Control Solutions, Inc.